

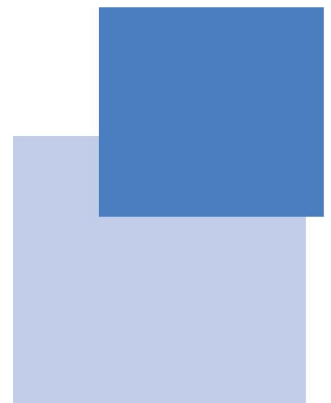


XIANGDA

# <<Shenzhou Xiangda Metal Products Co., Ltd.



Hebei Province,China





## Shenzhou Xiangda Metal Products Co., Ltd.

Shenzhou Xiangda Metal Products Co., Ltd. Founded in 2008, stands as a powerhouse in the wire mesh industry—an integrated high-tech enterprise combining R&D, manufacturing, sales, and global trade. Strategically located in Hebei Province, near Anping, the renowned “Hometown of Wire Mesh,” we benefit from efficient logistics and a mature industrial ecosystem.

Our factory has a modern production workshop of 76,000 square meters, 165 skilled employees (including 46 technicians and engineers), and more than 80 advanced production and testing equipment imported from Germany and Japan. The strong infrastructure makes us a recognized industry leader in Hebei Province and even the whole country.

We specialize in a comprehensive range of wire mesh products, including Wire Mesh Fences, Welded Wire Mesh, Razor Barbed Wire, Gabion Boxes, Window Screens and other related wire mesh products, and other customized solutions. Our products are widely used in industries such as petrochemicals, aerospace, air and liquid filtration, pharmaceuticals, food processing, environmental protection, and new energy—meeting demanding technical standards worldwide.

For international clients, quality is non-negotiable—and we go above and beyond. We hold certifications including ISO 9001, CE, SGS, and BV, backed by a strict quality management system: from premium raw material selection, to standardized production processes, to multiple quality inspections before shipment. Every product we deliver is compliant, consistent, and ready to perform.

Our advantages that have over 17 years of global trade experience, we export 90% of our output—over 8.6 million square meters of wire mesh and 8,000 tons of metal wire annually. Including more than 30 countries including the United States, Japan, South Korea, Thailand, Vietnam, Indonesia, Saudi Arabia, UAE, Egypt, South Africa, etc., and exported in large quantities to North America, Europe, the Middle East, and Southeast Asia.

We understand international standards, compliance, logistics, and customer expectations—ensuring every order is handled professionally and delivered on time.

We have profuse designs, the heart of low cost and good quality. Our price is very competitive. Because we are manufacturer, we are the source. We can make sure that you get the quality you need at the best possible price!

As a direct manufacturer, we eliminate intermediaries to offer high-quality products at factory-direct prices. If you are looking for custom specifications, Our OEM/ODM capabilities allow us to develop tailored solutions for your specific market needs—quickly, flexibly, and with full technical support.

We live by a simple principle: Your success is our success. With “quality first, service excellence” as our core value, and a dedication to “zero defects, zero complaints,” we don’t just deliver products—we build partnerships that last.

Choose Xiangda, and gain a reliable partner with the scale to deliver, the experience to support, and the commitment to help your business grow. We sincerely invite you to visit our factory and experience the Xiangda difference firsthand.

**60,000m<sup>2</sup>+**

Factory area

Insect Screening  
Manufacturer

**3,000,000m<sup>2</sup>+**

Capacity

Monthly Production  
Capacity

**80+**

Countries

With the whole World  
in Our Mind

**500**

Top Fortune 500

## ► Organizational Structure



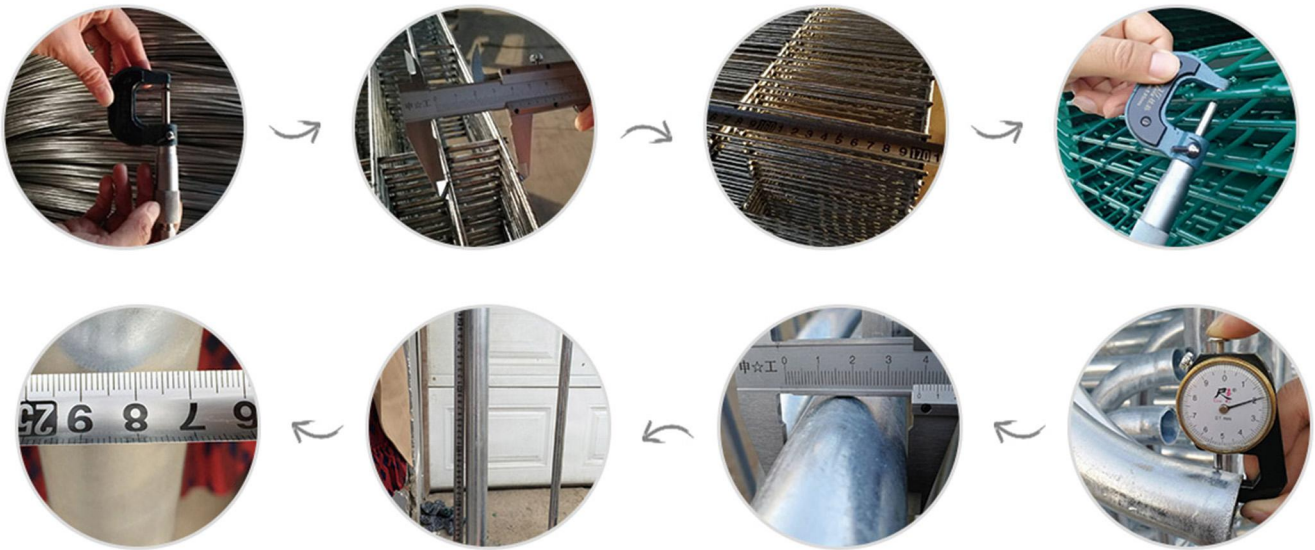
## ► Why Choose Us

Our products hold high reputation by the clients in the world with the high quality and competitive price.

We have profuse designs, the heart of low cost and good quality. We can make sure that you get the quality you need at the best possible price!

## ► Quality & Service

- 1.No matter FOB or CIF the price term is we would try our best to find a lowest freight cost for customers' reference.
- 2.The third-party inspection always gets real and true data from us and we will send production photos to customers if there is no inspection.
- 3.Do our best to help customer arrange the shipment and customs clearance.
- 4.Installation, maintenance and repair instructions with full information.
- 5.3-8 years warranty depends to different products.
6. Accept Changing or Refunding if the products cannot be installed rightly.



## ► Our Facotry

1)Our good quality is built on superior material in china,We adopt world production technology,Germany-imported machines are used to make sure superior quality...

2)We passed ISO,CE, SGS,BV certificate...Our products has been exported to 30 counties, Almost have 200 employees are working for us...

3)We have an excellent work devoted staff ready to serve our clients round the clock 24x7.We have TQM (Total QualityMan-agement) system to control quality

# CERTIFICATION

## HOW TO MAKE OUR RELATIONSHIP LONG-TERM GOOD COOPERATION?

► We can always that provide you with high-quality products and With Competitive Price, Fast Delivery Time and Best After Sale Service. we will continue to improve process control, efforts to reduce operating costs, improve product quality, to provide customers with competitive prices, to ensure the interests of customers. We take every customer seriously and make friends with them sincerely. No matter how big the order is, we will provide a full range of services.





# Production Machine



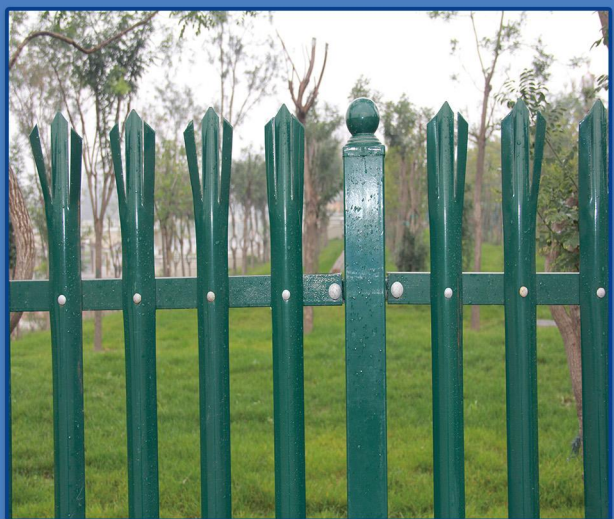
## ► Wire Mesh Fence

Fence is mainly used for road, highway, highway next to the bridge on both sides of the protection zone as a fence, can also be used for airports, ports, terminals security, municipal construction of the park, lawn, zoo, pool, Residential areas of the isolation and protection, hotels, supermarkets, entertainment protection and decorative products.

Features:

- 1). Product structure concise, beautiful and practical, easy to transport, installation from terrain restrictions.
- 2). The welding point is firm and effective to prevent man-made shear damage.
- 3). High efficiency dip ten years rust.
- 4). Easy disassembly, reusability, according to the need for re-layout of the fence.

### DISPLAY



Product Specification	
Color	Green, white, Black, Gray
Surface	1)Dip Coating,2)Hot galvanizing
Bolt Material	Steel
Connection between fence and post	Connect with fastener after welded.
Foundation	1)Ground screw, 2)Concrete foundation,3)Pile in type
Wire Diameter	1)4.0mm, 2)4.5mm, 3)5.0mm
Post	1)Round Pipe(usual $\phi$ 48mm),2)Quare pipe( usual size: 40*40*2mm)
Garnet wire	Can add garnet wire onto the fence
Standard	ISO 9001: 2000
Warranty	10 Years
Service Life	25 Years
Our Service	OEM / ODM



Chain Link Fence



Temporary Fence



Anti Climb Fence



Cattle Fence



Barricade



Field Fence



3D Fence



Palisade



Razor Barbed Wire



Barbed Wire

## ▶ Chain Link Fence

Chain Link Fences also called diamond mesh fences, cyclone fences. The chain link wire mesh is formed by twisting wire raw material together. There are also two kinds of edges which are folded edge and twisted edge. mainly for fencing use. The raw materials can be galvanized steel wire or PVC coated steel wire. The latter one can have custom colors and the most popular one is dark green.

**Weaving:** Woven diamond pattern provides strong, durable and flexible construction. The closely spaced diamond mesh construction gives your fence linear strength and springy texture to protect horses from injury and prevent predators from entering paddocks and pastures. It is a popular choice fence for both light residential and heavy commercial applications. It is a long-lasting product that requires little maintenance.

### Applications/Usages

With the high quality and best price, chain link fence is widely used in industries. widely used in highway, railway and other fence facilities. Also used for interior decoration, raising chickens, ducks, geese, rabbits and zoo fence. Fence of mechanical equipment, mechanical equipment of the transmission network, sports venues fence, the road greening fence.



#### Electric Galvanized

Smooth Surface,  
Bright Appearance



#### Hot Dipped Galvanized

Recommend,  
Common Zinc Coating: 40-60g/m<sup>2</sup>  
High Zinc Coating: More than  
200 g/m<sup>2</sup>



#### Galvanized+PVC Coating

Recommend,  
Popular colors of PVC Coating:  
1> Dark Green;  
2> Black

### Description

Aperture: 1/2"-3"

Material: high quality low carbon steel wire, stainless steel wire, aluminum wire

Weave: mesh uniform, smooth surface, weaving concise, corchet, beautiful and easy.

Opening	1"	1.5"	2"	2.25"	2.4"	2.5"	3"	4"
	25mm	40mm	50mm	55mm	60mm	65mm	76mm	100mm
Wire diameter	18#-7#							
	1.20mm-5.00mm							
Length of the roll	1.0m-50m							
Width of the roll	0.5m-5.0m							
Materials and specifications can be made according to customers specific requirements.								

## ▶ Anti climb fence

It is also named 358 Wire mesh fence, and it is known as "PRISON MESH" or "358 security fence", it is a special fencing panel. '358' comes from its measurements 3" x 0.5" x 8 gauge which is approx. 76.2mm x 12.7mm x 4mm in metric. It is a professional structure designed combined with a steel framework coated with zinc or RAL color powder.

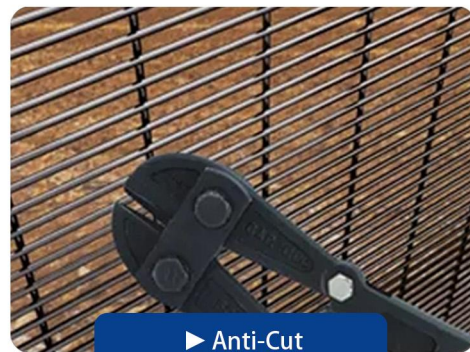
It is extremely difficult to penetrate. The mesh opening is so small that people can't put fingers into it and climb it. And the 8 gauge wire is so strong that can't be cut by bolt cutters and wire cutters. The closeness of the horizontal wires in this anti-climb fence also makes for a mesh panel almost impossible to grip, thus climb, when used as part of a fencing system, and thus the name "Anti-climb". It can be bent in part to enhance the aesthetic effect.

It is also usually used with barbed wire, razor wire and wall spikes to further enhance the security. It has higher security can be used in prison, borderline, power plant and some places that require strong security and privacy. In addition, our products with galvanized or PVC coating surface treatment has good corrosion resistance.

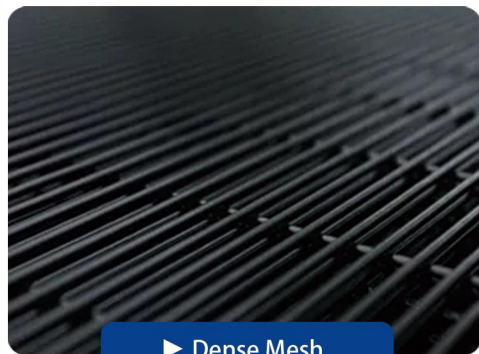
### DISPLAY



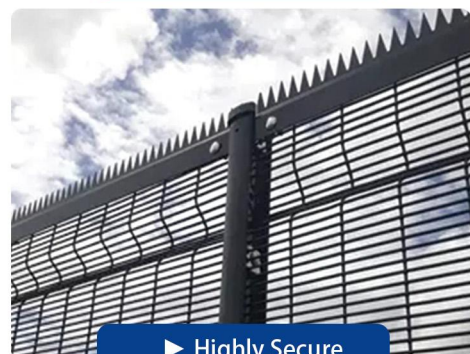
▶ Anti-climb



▶ Anti-Cut



▶ Dense Mesh



▶ Highly Secure

### STRICT PRODUCTION TESTING

Detecting Mesh



Wire Diameter



Accessories Install



Column Inspection



Assembly



## 358 Fence Panel Product Details

Specification of 358 Security Fence	
Mesh Opening	12.7x76.2mm ( 0.5" x 3" )
Wire Diameter	3/3.5/4mm
Panel Height	1.2m-6m ( Suggest size : 2m/2.4m/3m )
Panel Width	2.0-3.0m ( Suggest size : 2m/2.2m/3m )
Post Type	Square Post(SHS) : 60x60x2.0/2.5/3.0mm    80x80x2.0/2.5/3.0mm
	Rectangular Post(RHS) : 40x60x2.0/2.5/3.0mm    40x80x2.0/2.5/3.0mm
	60x80x2.0/2.5/3.0mm    80x100x2.0/2.5/3.0mm
Surface Treatment	hot dipped galvanized, galvanized +powder coated, galvanized +PVC coating
Color	RAL 6005 green, RAL 7016 gray, All RAL color can be customized
Note	The fence can be customized according to your required if above specification is not satisfied with you
	Most of the panels are customized, please let us know your request.

It including panel mesh ,post and accessories, the panel mesh is welded with galvanized wire as per EN10244 or low carbon steel wire in high tensile strength, and the post variety is C post, UC post,H post,T post,square post,round post,rectangular post.



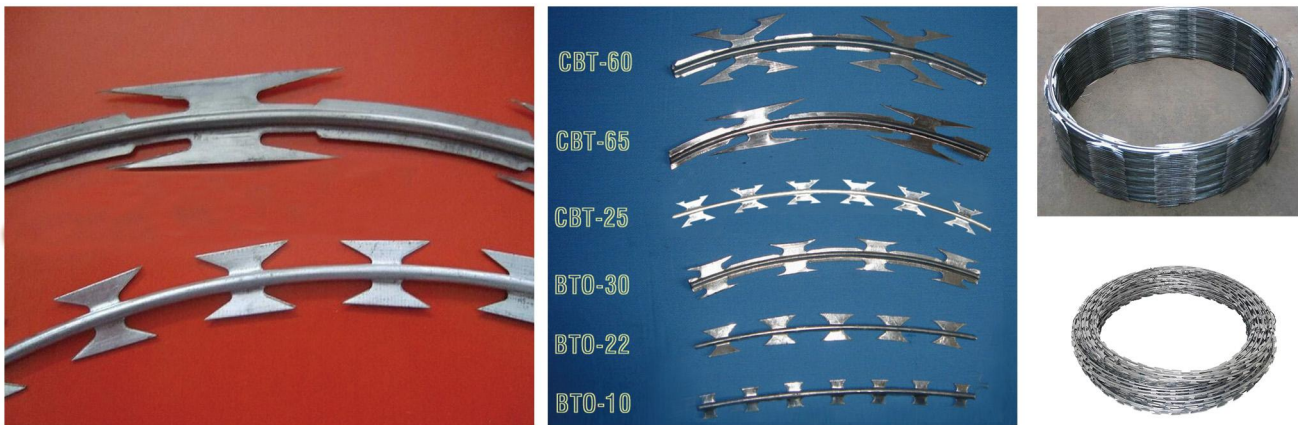
## ▶ Razor Wire

### Razor Barbed Wire / Concertina Razor Wire / Razor Wire fence / Razor Barbed Wire Mesh

Razor barbed wire also name Concertina Razor Wire or Razor Tape. It is a kind of modern security fencing materials fabricated with razor-sharp steel blade and high-tensile wire. Barbed Tape can be installed to achieve the result of frightening and stopping to the aggressive perimeter intruders, with piecing and cutting razor blades mounted at the top of the wall, also the special designs making climbing and touching extremely difficult. The wire and strip are galvanized to prevent corrosion.

Currently, barbed tape has been widely used by many countries in military field, prisons, detention houses, government buildings and other national security facilities. Recently years, barbed tape has apparently become the most popular high-class fencing wire for not only military and national security applications, but also for cottage and society fence, and other private buildings.

### Razor Blade Specification



**Single razor wire**

Single coil Concertina Wire is installed without clips, it runs in natural loops on walls. Cost less and can be easily installed.



**Cross razor wire**


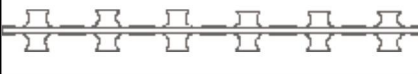

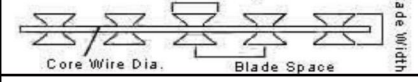
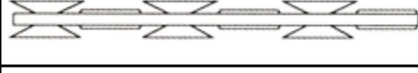
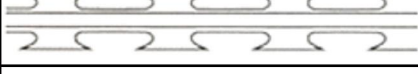


Two pieces of razor wire were bounded together by clips to make it more strength. The spiral intersecting barbed wire presents an intersecting shape.

Material: Stainless steel (304, 304L, 316, 316L, 430), carbon steel.

Surface treatment: Galvanized, PVC coated (green, orange, blue, yellow, etc.), E-coating (electrophoretic coating), powder coating.

Dimensions:

- \* Razor wire cross section profile
- \* Standard wire diameter: 2.5 mm ( $\pm 0.10$  mm).
- \* Standard blade thickness: 0.5 mm ( $\pm 0.10$  mm).
- \* Tensile strength: 1400–1600 MPa.
- \* Zinc coating: 90 gsm – 275 gsm.
- \* Coil diameter range: 300 mm – 1500 mm.

Reference Number	Blade Style	Thickness	Wire Dia	Barb Length	Barb Width	Barb spacing
BTO-10		0.5 $\pm$ 0.05	2.5 $\pm$ 0.1	10 $\pm$ 1	13 $\pm$ 1	26 $\pm$ 1
BTO-12		0.5 $\pm$ 0.05	2.5 $\pm$ 0.1	12 $\pm$ 1	15 $\pm$ 1	26 $\pm$ 1
BTO-18		0.5 $\pm$ 0.05	2.5 $\pm$ 0.1	18 $\pm$ 1	15 $\pm$ 1	33 $\pm$ 1
BTO-22		0.5 $\pm$ 0.05	2.5 $\pm$ 0.1	22 $\pm$ 1	15 $\pm$ 1	34 $\pm$ 1
BTO-28		0.5 $\pm$ 0.05	2.5	28	15	45 $\pm$ 1
BTO-30		0.5 $\pm$ 0.05	2.5	30	18	45 $\pm$ 1
CBT-60		0.6 $\pm$ 0.05	2.5 $\pm$ 0.1	60 $\pm$ 2	32 $\pm$ 1	100 $\pm$ 2
CBT-65		0.6 $\pm$ 0.05	2.5 $\pm$ 0.1	65 $\pm$ 2	21 $\pm$ 1	100 $\pm$ 2

Barbed Tape Wire Specification  
(Barbed Tape Concertina (CBT); Barbed Tape Obstacle (BTO))

Outside Diameter	No. of Loops	Standard Length per Coil	Type	Notes
450mm	33	7-8M	CBT-60.65	Single coil
500mm	56	12-13M	CBT-60.65	Single coil
500mm	41	10M	CBT-65	Single coil
700mm	56	13-14M	CBT-60.65	Single coil
700mm	41	10M	CBT-65	Single coil
960mm	56	14-15M	CBT-60.65	Single coil
960mm	53	13M	CBT-65	Single coil
450mm	56	8-9M (3 CLIPS)	BTO-10.12.18.22.28.30	Cross type
500mm	56	9-10M (3 CLIPS)	BTO-10.12.18.22.28.30	Cross type
500mm	102	16M	BTO-10.15.22	Cross type

Outside Diameter	No. of Loops	Standard Length per Coil	Type	Notes
600mm	56	10-11M (3 CLIPS)	BTO-10.12.18.22.28.30	Cross type
600mm	56	8-10M (5 CLIPS)	BTO-10.12.18.22.28.30	Cross type
600mm	86	14M	BTO-10.15.22	Cross type
700mm	56	10-12M (5 CLIPS)	BTO-10.12.18.22.28.30	Cross type
700mm	72	12M	BTO-10.15.22	Cross type
800mm	56	11-13M (5 CLIPS)	BTO-10.12.18.22.28.30	Cross type
800mm	64	10M	BTO-10.15.22	Cross type
900mm	56	12-14M (5 CLIPS)	BTO-10.12.18.22.28.30	Cross type
960mm	56	13-15M (5 CLIPS)	BTO-10.12.18.22.28.30	Cross type
960mm	52	9M	BTO-10.15.22	Cross type
980mm	56	14-16M (5 CLIPS)	BTO-10.12.18.22.28.30	Cross type

**Notes:**

Standard products are shown in the tables above, special specifications available on request.

Standard materials are either galvanized or stainless steel.

Special sizes can be offered according to the requirements' of the customers.

Materials: Galvanized steel sheet and wire, also stainless steel sheet and wire



**Wall Topping**



**Security Fencing**



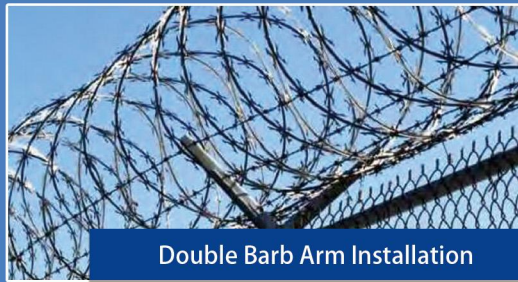
**Fence Topping & Bottom**



**Fence Topping, Center & Bottom**



**Single Barb Arm Installation**



**Double Barb Arm Installation**



**Ground-Farm Protection**



**Ship Guard**

## ► Concertina Razor Wire

For Concertina Wire, we have many kinds:  
Single coil Razor Wire, Crossed Razor Wire, Flat warp razor wire, Razor Wire fence.

### Single Coil Razor Wire

Single coil Concertina Wire is installed without clips, it runs in natural loops on walls. Cost less and can be easily installed.

### Crossed Razor Wire

Two pieces of razor wire were bounded together by clips to make it more strength. The spiral intersecting barbed wire presents an intersecting shape after opening with beautiful feature and practicality.

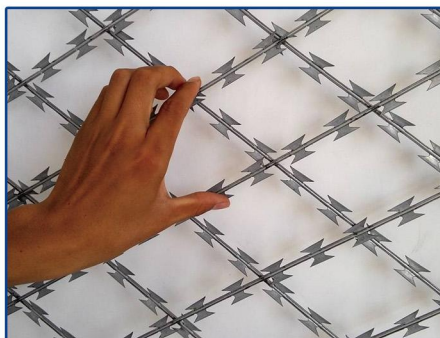
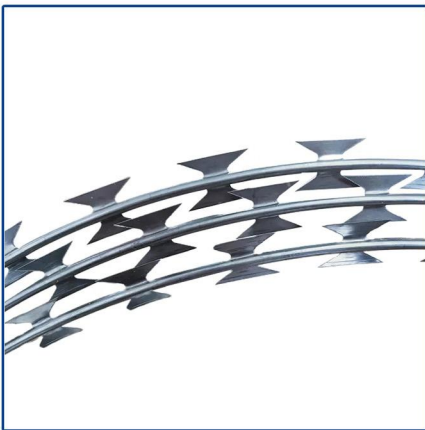
### Flat warp razor wire

Flat warp razor wire is a new type of razor barbed wire. Press two loops into flat then expand them across. We usually use it together with been line razor barbed wire to build a defending wall, or use it alone as a fence.

### Razor Wire Fence

Welded razor mesh fence is a new form of razor barbed wire mesh for security, it with practicality blade and the feature looks very beautiful. It can be used for guard net of fence, doors and windows and also can be used in military. The specification can be designed as the customers' need.

We are provide high quality, low cost and effective security products including barbed wire, chain link fence, razor wire ribbons, concertina coils and flat welded razor wire mesh products to meet the challenges of the war of aggression, preventing the invasion and protecting security. Our razor wire is the consistency of engineering design, structure and composition, and is in accordance with national defense, national and industrial standards. All products are made from barbed wire abnormal tough, high-quality stainless steel parts. Most of our products are for export to Europe, the USA, Southeast Asia and other countries.



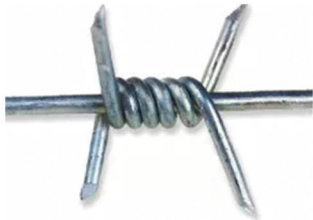
## ▶ Barbed Wire

barbed wire / barbed wire fencing

Double twist barbed wire is a kind of modern security fencing materials fabricated with high-tensile wire. Double Twist Barbed Wire can be installed to achieve the result of frightening and stopping to the aggressive perimeter intruders, with piecing and cutting razor blades mounted at the top of the wall, also the special designs making climbing and touching extremely difficult. The wire and strip are galvanized to prevent corrosion.

Barbed wire is a common and cost-effective wire used in perimeter security fencing and farm fencing. A barbed wire fence is very easy to construct and can last for several decades even with minimal maintenance work.

Installing barbed wire is simple and requires minimum level of skills. Several barbed wire strands might be necessary to be installed in between posts. The multiple strands of barbed wire are necessary to ensure that the gaps will be small enough to prevent livestock from passing through. Smaller livestock, such as sheep and goats, will require closely spaced barbed wire strands in between posts to prevent them from crossing over.



Single Twist Barbed Wire



Double Twist Barbed Wire



Traditional Twist Barbed Wire



Galvanized barbed wire



PVC coated barbed wire

APPLICATION  
SCENARIO



## ► Fiberglass Insect Screen

## Window Screen

Fiberglass Insect Screen enjoys graceful and generous appearance, suitable for all sorts of airy in salvation and preventing insect and mosquito.

It Crafted with cutting-edge weaving techniques, this standard soft fiberglass insect screen is made from plain-woven PVC-coated fiberglass yarn finished under high temperature. the mesh is clear and stable, and has good capacity in ventilation and transparency.

It features advantages such as flame resistance, rust resistance, tear resistance, easy-to-clean, cold and heat resistance, mildew and heat resistance, stable structure, good ventilation, long service life, high strength, twists and turns resistance.

Application: Widely used in home use, livestock farming, gardening, agricultural, and industrial scenarios. It is ideal for installation on doors and windows for the purpose of fly, mosquito, and insect prevention, as well as ventilation.

It is the standard, classic window screen, and has been the most widely used one. The standard 18x16 mesh is the most flexible, economical, and easy-to-install screen, it is also the most versatile among all types of insect screens.



Anti-mosquito



Waterproof



Breathable



Certificate



Good Quality

PRODUCT INSTRUCTION	
Material	65%PVC 35%Glass Fiber Yarn
Weave type	Plain weave
MESH SIZE	20x20,18x16,16x16,16x14,14x14,etc
COLOR	black, grey, grey-white, brown, green, etc
WEIGHT	80-120g/m
WIDTH	0.3-3.0m
LENGTH	15m,25m,30m,90m,300m or as per customers'requirement
Weight	85g,90g,100g,110g,115g,120g,125g,130g
USELIFE	5 years
PACKAGE	woven bag or carton box
*OME is available	
*Private Label	

# ▶ Aluminum Window Screen

## Window Screen

Aluminum alloy window screens are woven from aluminum alloy wires containing magnesium, also known as "aluminum-magnesium alloy window screens" and "alu-minum window screens".

Characteristics:

2 types aluminum alloy window screens: silver and black PVC coating. Strong corrosion resistance, and are suitable for use in humid environments.

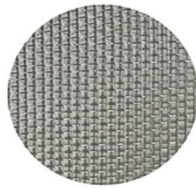
Aluminum window screens are widely used in doors, windows and corridors to prevent.



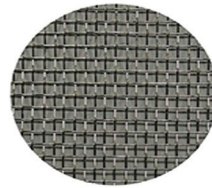
**Black**



**Bright**



**Silver**



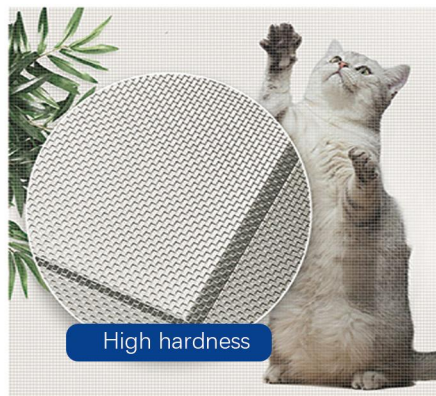
**SS finish**



**Anti-mosquito**



**Waterproof**



**Breathable**



**Certificate**



**Good Quality**

MESH	WIRE DIAMETER(mm)	ROLL SIZE(m)
14X14	0.21 0.23 0.25	length: 15-30 width: 0.6-1.8
16X16	0.21 0.23 0.25	
16X18	0.19 0.21 0.23 0.25	
20X20	0.19 0.21	

## ► Plastic Window Screen

Material: High-density polyethylene(HDPE), good quality plastic.

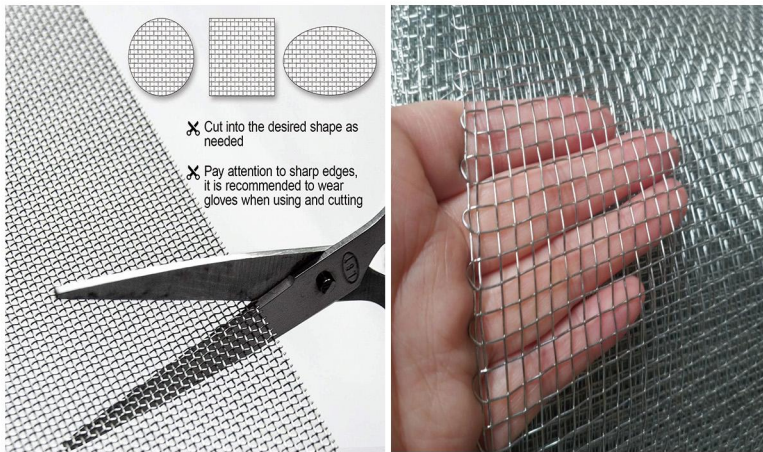
Characteristics: Good insect repellent effect, good air permeability, light material, easy to clean, easy to transport, and affordable; the mesh screen is uniform, colorful and beautiful, and it is a substitute for glass fiber.

Application: Widely used in various fields such as family residences, pest control, breeding, agriculture, etc.



## Window Screen

## ► Galvanized Window Screen



It is a screen made of plain weaving type iron wire, which is usually galvanized first and then woven.

Material: galvanized wire.

Characteristics: Good toughness, corrosion resistance, easy to clean, not easy to deform.

Application: Widely used in construction nets, machine protection, hotels and residential buildings to prevent mosquitoes and flies, etc.

## ► Stainless Steel Window Screen



SS window screen uses plain weaving method, it has good air permeability, light transmission and other properties. It is the first choice protective product for doors and windows in high-class office buildings, residences, hotels.

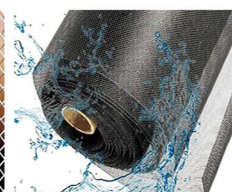
Material: SUS304 316 304L 316L, etc.

Characteristics: High strength, toughness, high temperature resistance, flame retardant, good light transmission, etc.

Application: Widely used in industry, agriculture, animal husbandry, hotels and residential buildings to prevent mosquitoes and flies, and is strong and anti-theft.



flame retardant and fire resistance



Anti-corrosion and moisture-proof, not rust



Easily cut and shape

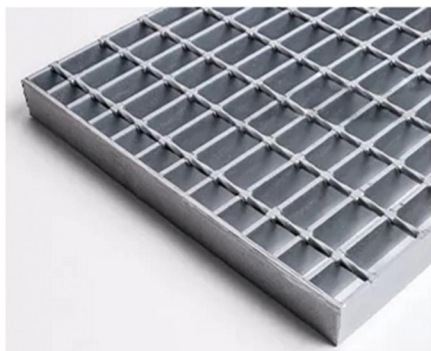
## ► Steel Grating( Plain / Smooth)

Steel grating is made by welding with flat steel and bars with certain distances. The press-lock steel grid is constructed with two close-tolerance slotted bars bonded together by tremendous hydraulic pressure. And this production can let press-locked grating be a permanent locking. With high strength and firm structure. The surface treatment can be hot galvanizing, cold galvanizing (electric galvanizing), paint spraying, antirust oil soaking, dipping, plastic spraying, and no treatment.

It goes through cutting, opening, edging and other processes. The products enjoy the features of high strength, light structure, high bearing, convenience for loading and other properties. The hot dipped zinc coating gives the product excellent anti-corrosion resistance. Roof Safety Walkway Light Weight Press Locked Steel Bar Grating Galvanized Metal Steel Grating Supplier.

Steel grating with high strength and firm structure is made up of carbon steel, aluminum steel, or stainless steel. According to the manufacturing methods, it can be divided into four types: welded, press-locked, swage-locked, and riveted gratings. According to the surface shapes, it can be divided into smooth and serrated gratings. With various styles and sizes for choice.

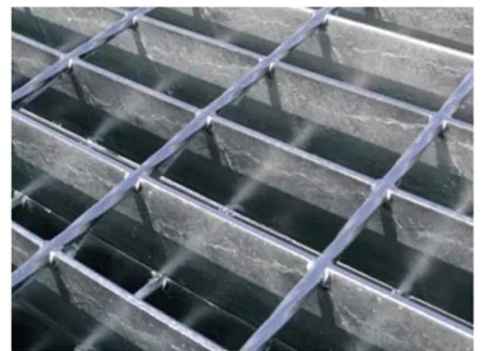
Used: Railing of the fence tower, alloy steel grid plate used in building materials, power station, boiler. Shipbuilding, petrochemical, chemical and general industrial buildings, municipal construction and other industries, with ventilated and pervious to light, non slip, bearing capacity of strong, beautiful and durable, easy cleaning, convenient installation, etc.. The steel grid plate has been in the domestic and foreign businesses to get widely used, mainly used for industrial platform, stair treads, the handrail, the channel floor, railway bridge side, high-altitude platform, drainage ditch cover, manhole covers, road grille, stereo parking lot, organs, schools, factories, enterprises and institutions, sports field, garden villas, also can be used as houses outside the window, balcony guardrail, highway, railway and so on.



Twisting steel blocking



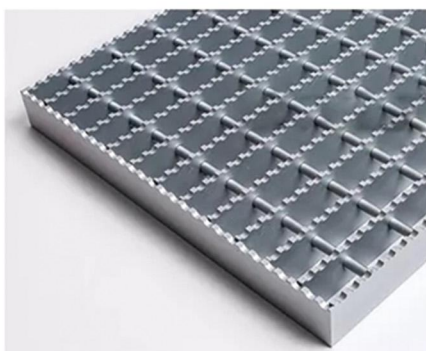
Round steel perforation method



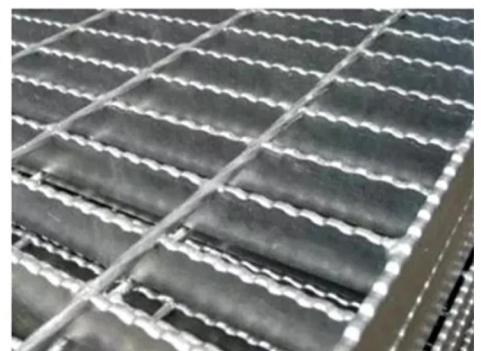
Plain Surface



Insert pressure lock



Tooth-shaped perforation



Serrated Surface

No.	Item	Description
1	Bearing bar	25x3, 25x4, 25x4.5, 25x5, 30x3, 30x4, 30x4.5, 30x5, 32x5, 40x5, 50x5, 65x5, 75x6, 75x10, 100x10mm etc; I bar: 25x5x3, 30x5x3, 32x5x3, 40x5x3 etc US standard: 1'x3/16', 1 1/4'x3/16', 1 1/2'x3/16', 1'x1/4', 1 1/4'x1/4', 1 1/2'x1/4', 1'x1/8', 1 1/4'x1/8', 1 1/2'x1/8' etc.
2	Bearing bar pitch	12.5, 15, 20, 23.85, 25, 30, 30.16, 30.3, 32.5, 34.3, 35, 38.1, 40, 41.25, 60, 80mm etc US standard: 19-w-4, 15-w-4, 11-w-4, 19-w-2, 15-w-2 etc.
3	Cross bar pitch	38.1, 50, 60, 76, 80, 100, 101.6, 120mm, 2' & 4' etc
4	Material Grate	ASTM A36, A1011, A569, Q235, S275JR, SS304, Mild steel & Low carbon steel, etc
5	Surface treatment	Black, self colour, hot dip galvanized, painted, spray coating
6	Grating Type	Plain / Smooth, Serrated /teeth, I bar, serrated I bar
7	Standard	China: YB/T 4001.1-2007, USA: ANSI/NAAMM(MBG531-88), UK: BS4592-1987, Australia: AS1657-1985, Germany: DIN24537-1-2006, Japan :JIS
8	Application	-Rotation ways, channels, and platforms for pump rooms and engine rooms in various ships; -Flooring in various bridges such as railway bridge sidewalks, over-bridges across the street; -Platforms for oil extraction sites, car washing sites and air towers; -Fencings for car-parks, buildings and roads; drainage trench covers and drainage pit covers for high strength .

## PRODUCT PICTURE



## ▶ Welded Wire Mesh Rolls

### Galvanized Welded Wire Mesh

We supply welded wire mesh electro galvanized or hot dipped galvanized.

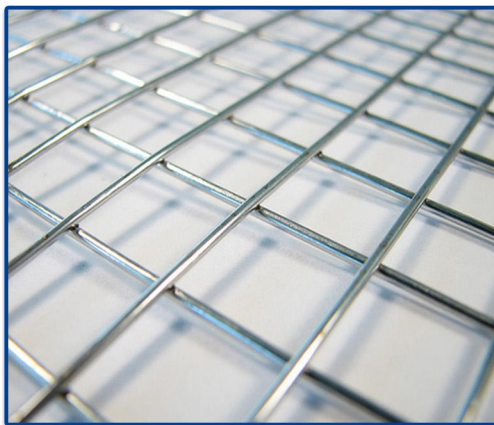
In the forms of rolls or panels, for construction, fences and other industrial uses.

It enjoys the feature of corrosion resistance compared with plain welded wire mesh. Mainly used as fencing panels or further fabricated into wire partitions, wire container panels, wire baskets, welded wire fences, poultry fences and other welded products.

### PVC Coated Welded Wire Mesh

PVC Coated Welded Wire Mesh is made of high quality of welded galvanized iron wire mesh, to be coated with PVC powder by advanced automatic equipments. The coated layer is even, strong adhesiveness and bright luster with good anti-corrosive prosperity. Suitable for houses and properties, companies, gardens recreation areas, parks. All kinds of colors can be coated according to customers' special requirements.

Roll width: 24", 36", 48", 60", 72" or 0.5m to 1.8m Roll length: 100' or 30m Colors: Green, blue, white or other colors at customers request.



Opening		Wire Diameter
In inch	In metric unit(mm)	
1/4" x 1/4"	6.4mm x 6.4mm	22,23,24
3/8" x 3/8"	10.6mm x 10.6mm	19,20,21,22
1/2" x 1/2"	12.7mm x 12.7mm	16,17,18,19,20,21,22,23
5/8" x 5/8"	16mm x 16mm	18,19,20,21,
3/4" x 3/4"	19.1mm x 19.1mm	16,17,18,19,20,21
1" x 1/2"	25.4mm x 12.7mm	16,17,18,19,20,21
1-1/2" x 1-1/2"	38mm x 38mm	14,15,16,17,18,19
1" x 2"	25.4mm x 50.8mm	14,15,16
2" x 2"	50.8mm x 50.8mm	12,13,14,15,16
Technical Note:		
1. Standard roll length: 30m; width: 0.5m to 1.8m		
2. Special sizes available at request		
3. Packing: in waterproof paper in rolls. Custom packing available at request.		



## ► Gabion Box

Gabion box is rectangular basket fabricated from a heavily galvanized hexagonal mesh. Gabion box depends mainly on the interlocking of individual stone and rock within the wire mesh for internal stability, and their mass or weight to resist hydraulic and earth forces. It's a porous type of structure that can sometimes be vegetated. Once assembled, the gabion is filled with stone or rock and the lid secured to form a monolithic structure in accordance with the recommended installation procedures. Gabion box is environment friendly and cost effective when compared to other options. The strength comes from a double twisted hexagonal mesh of steel wire which is reinforced by selvedge of heavier gauge wire running along the edge and by transverse internal diaphragm at 1m centre. In the event of accidental breakage of one or more of the wires, the double twisted wire configuration will ensure that the mesh will not unravel.

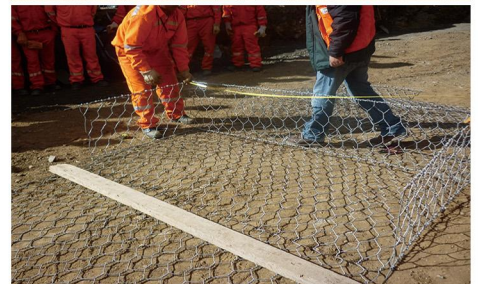
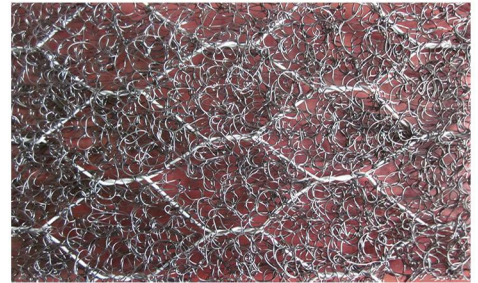
### Applications:

Gabion box is rectangular woven wire mesh baskets filled with rock to form flexible, permeable, monolithic structures such as retaining walls for commercial, industrial and road projects. They are also used for erosion control, bank stabilisation, architectural and urban design features, noise attenuation structures and weirs.

Mesh Size	Mesh Wire Dimate	Selvedge Wire	Lacing Wire	Max Width
60*80mm	2.0~2.8mm	3.0~4.0mm	2.0~2.2mm	4m
80*100mm	2.0~3.0mm	3.0~4.0mm	2.0~2.2mm	4m
80*120mm	2.0~3.0	3.0~4.0mm	2.0~2.2mm	4m
100*120mm	2.0~3.0	3.0~4.0mm	2.0~2.2mm	4m
100*150mm	2.0~3.0	3.0~4.0mm	2.0~2.2mm	4m
120*150mm	2.0~3.0	3.0~4.0mm	2.0~2.2mm	4m

Remark: Special size can be also produced at the buyer's option.

Length	Width	Height	Number of Diaphra	Capacity
2.0m	1.0m	0.15~0.3m	1	0.3~0.6 m <sup>3</sup>
3.0m	1.0m	0.15~0.3m	2	0.45~0.9m <sup>3</sup>
4.0m	1.0m	0.15~0.3m	3	0.6~1.2 m <sup>3</sup>
2.0m	1.0m	0.5m	1	1.0 m <sup>3</sup>
3.0m	1.0m	0.5m	2	1.5 m <sup>3</sup>
4.0m	1.0m	0.5m	3	2.0 m <sup>3</sup>
1.0m	1.0m	1.0m	0	1.0 m <sup>3</sup>
1.5m	1.0m	1.0m	0	1.5 m <sup>3</sup>
2.0m	1.0m	1.0m	1	2.0 m <sup>3</sup>
3.0m	1.0m	1.0m	2	3.0 m <sup>3</sup>
4.0m	1.0m	1.0m	3	4.0 m <sup>3</sup>



## ▶ Welded Wire Mesh Panel

Welded Wire Mesh Flat Panel is made of superior quality welded mesh, with flat even surface, firm structure, be used extensively in building, food, agriculture and so on.

**Assortments available:**

- Stainless Steel Welded Mesh Panels
- Galvanized Welded Mesh Panels
- Hot-dip Zinc Plating Welded Mesh Panels
- Black Welded Mesh Panels

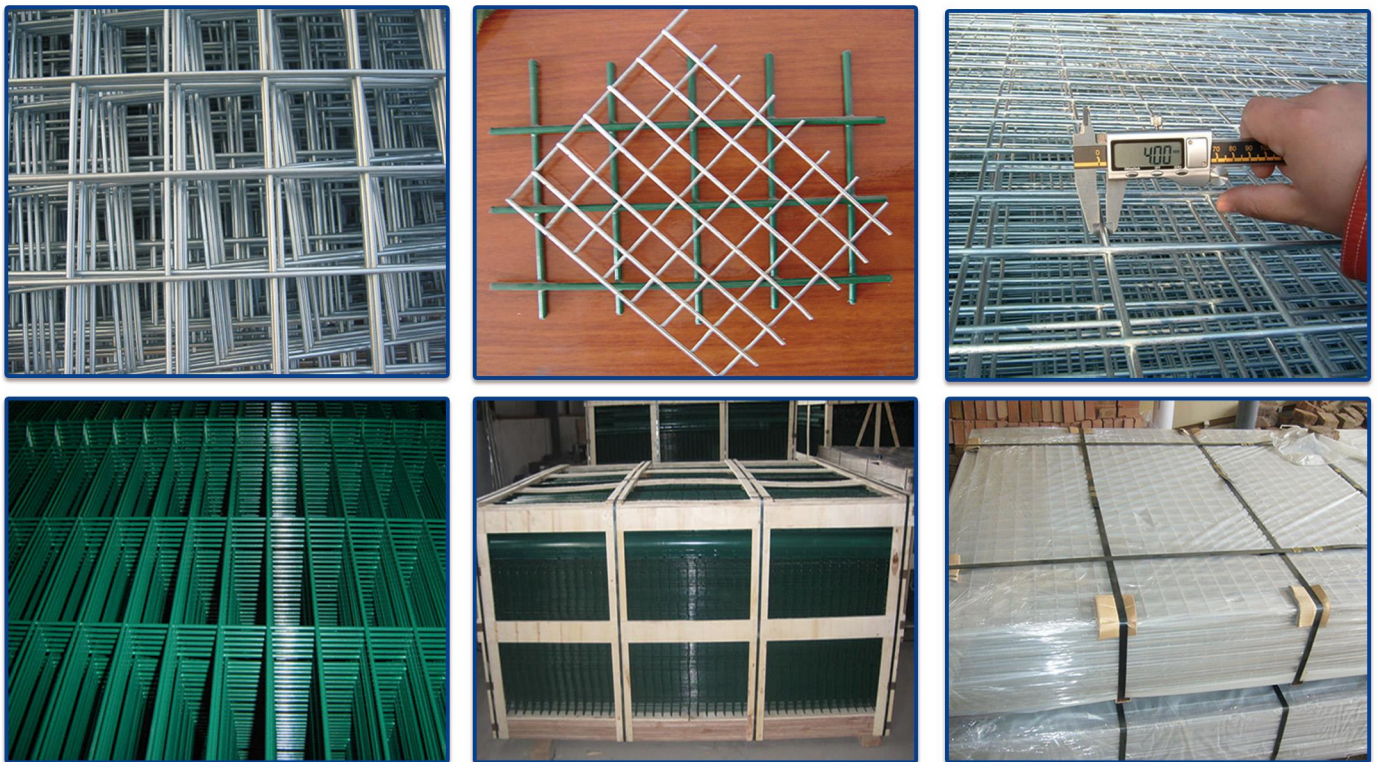
**Characteristics:** Welded wire mesh panels enjoy such properties as corrosion resistance, aging resistance, sunshine resistance and weather resistance. Moreover, this kind of Welded Wire Mesh Panel has flat even surface and strong structure, therefore it can offer a long service life and the service life can reach to several decades.

Forms of corrosion resistance include electric galvanizing, hot-dipp galvanizing, PVC spraying and PVC coating.

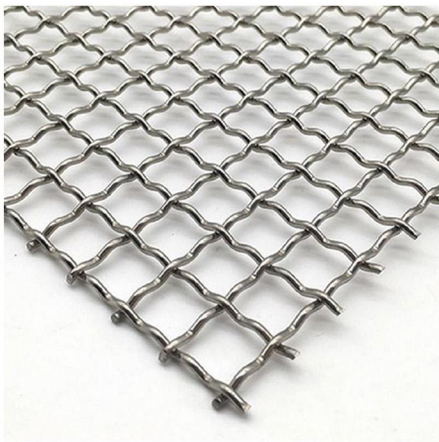
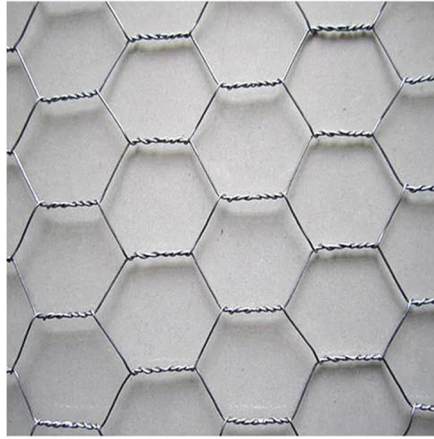
**Usage:** Welded Wire Mesh Panel is widely used on building, food, agriculture etc. For example, it is used on reinforced concrete construction, floor slabs reinforcement, brick wall reinforcement, floor warming etc.

WIRE DIAMETER	MESH	
	Inch	MM
1.5mm	1/2" X 1/2"	12.7mm X 12.7mm
2mm	1" X 1"	25.4mm X 25.4mm
3mm	1" X 1"	25.4mm X 25.4mm
3mm	1-1/4" X 1-1/4"	31.7mm X 31.7mm
4mm	1-1/2" X 1-1/2"	38mm X 38mm
4mm	1-1/2" X 1-1/2"	38mm X 38mm
4mm	1-1/2" X 1-1/2"	38mm X 38mm
2mm	2" X 2"	50.8mm X 50.8mm
3mm	2" X 2"	50.8mm X 50.8mm
3mm	2" X 2"	50.8mm X 50.8mm
4mm	2" X 2"	50.8mm X 50.8mm
4mm	2" X 2"	50.8mm X 50.8mm
4mm	2" X 2"	50.8mm X 50.8mm
4mm	2" X 2"	50.8mm X 50.8mm
4mm	2" X 2"	50.8mm X 50.8mm
5mm	2" X 2"	50.8mm X 50.8mm
5mm	2" X 2"	50.8mm X 50.8mm
6mm	4" X 2"	101.6mm X 50.8mm
6mm	4" X 4"	101.6mm X 101.6mm

### DISPLAY

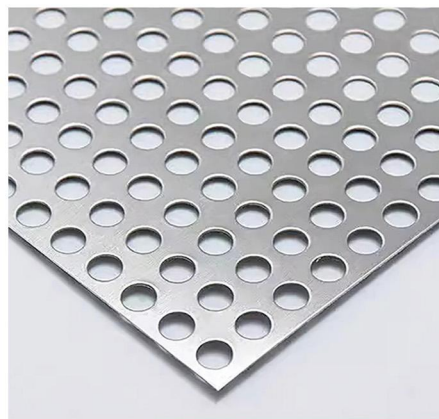
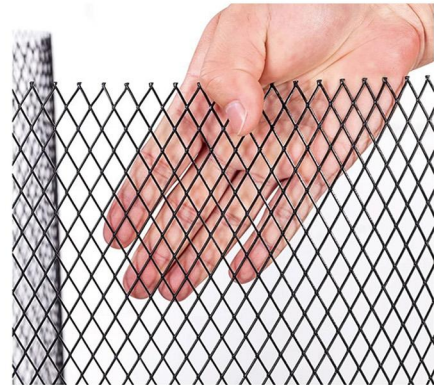


▶ Hexagonal Wire Netting



◀ Crimped Wire Mesh

▶ Expanded metal Sheet



◀ Perforated Metal Sheet

## Other Products



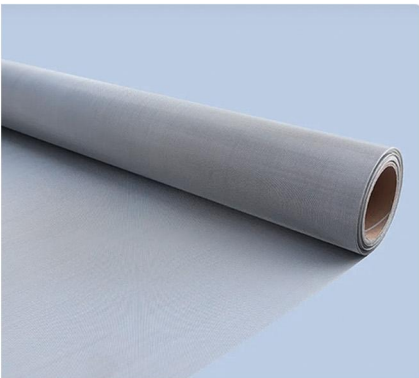
Crowd Control Barrier



Temporary Fences



Guardrail



Stainless Steel Mesh



Decorative Wire Mesh



Field Fence



Galvanized Wire



Black Annealed Wire



Galvanized Nails



Trolley



Shopping Cart



Turnover Basket



## Production inspection

- 1-Control the quality of products
- 2-Generate quality inspection report
- 3-Improve customer satisfaction
- 4-Finding problems during the production in time and improve

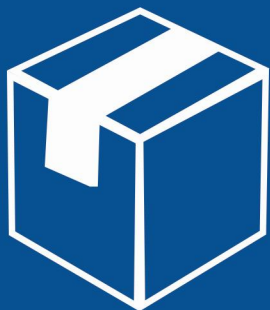


## Inspection before loading



- Secondary inspection of product quality
- Elimination of defective products
- Packaging Inspection
- Quantity inspection
- Generate quality inspection report
- Improve customer satisfaction

# ➤ Packaging



Strong and perfect packaging can protect the product not to be damaged in the course of transport



► Quality Inspection Equipment



Equipment for measuring wire tensile strength



Salt spray test equipment



Zinc Coating Testing Machine



Electronic scale



Micrometer



Caliper



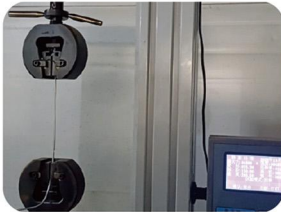
Thickness tester



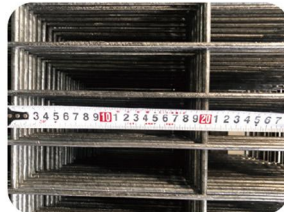
Tape measure

► Inspection Standard

Each order must be inspected according to Inspection Standard



tensile testing



mesh size



square post size



post thickness



round post size



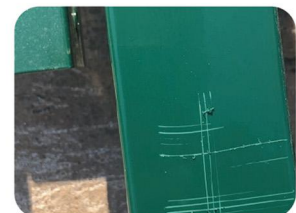
zinc amount



wire diameter



panel size



adhesion testing

# ▶ Loading Photo



By ship



By train



By truck



By plane



# F A Q

## <Frequently Asked Questions>

- ▶ Q: Are you trading company or manufacturer ?
- ▶ A: Our company is a combination of production and trade. Therefore, we are able to control every part of the process to make sure that our product can meet your needs. We can give you Competitive Price, Because all of producing is made by ourselves,so our cost price is more competitive than other suppliers.
  
- ▶ Q: Where is your factory? Can I come to have a visit?
- ▶ A: Yes, Of course you are welcomed to visit our factory. Our factory in Hebei Province, Near with Anping(Hometown of Wire Mesh). The nearest airport is Shijiazhuang Airport and Beijing Airport. And it is 2 hours away from Shijiazhuang, 3 hours away from Beijing. The nearest Train Station is Shijiazhuang, Dezhou, Hengshui, Cangzhou. It would take 1.5-2 hours from here. Inform us your schedule, we can pick you up then.
  
- ▶ Q: Can I get a samples?
- ▶ A: Sample is available. Usually we'd like to provide small pieces free sample for the first cooperation to show our sincerity, But for some unusual grade products should be charge.and customers pay for the courier cost. And all the sample cost will be refunded after you place the order.
  
- ▶ Q: How to check the quality of the order?
- ▶ A1: We provide preproduction samples before mass production for all customers if needed.We have two times test for all goods, one is the workshop staff to check the goods, the other is business staff to recheck the goods.
- ▶ A2: We provide quality certs such as measurement report, material data sheet, COO, COA, etc. to all customers before delivery.
- ▶ A3: We accept third party inspection such as SGS, TUV, INTERTEK, BV, etc.
  
- ▶ Q:If the quality is not met my request, how do you solve this problem?
- ▶ A:First of all, we don' t allow any defective products to leave our factory.We do strict quality inspection in every step and guarantee to reduce the defective rate to less than 0.1%.
- ▶ A2:But if there is any problem, we will guarantee to solve it within 2 working days after your pictures or videos proof.
  
- ▶ Q:Which kind of Trading Terms you can accept?and delivery date?
- ▶ A1: We prefer T/T 30% as downpayment, balance against B/L copy; We can also accept 100% LC at sight. If it is small order,We can accept Western Union and PayPal, Other payment item is can negotiable.
- ▶ A2:lead time is 7-25days according to the order.We sure arrange production for you as soon as possible, And we haven' t received any complaint about the delivery time.



# F A Q

## <Frequently Asked Questions>

▶ Q: Discount?

▶ A: Our products aim at high quality and reasonable price. Use high cost raw material and professional production, But if you place large order, We will give you discount.

▶ Q: Can you provide OEM service?

▶ A: Yes, all the products can be made as your require. Also we have some hot sale products can recommended to you.

▶ Q: Standard?

▶ A: We follow AISI,ASTM,GB,EN,DIN,ISO and so on, We get ISO,CE,SGS and BV certificates, What is more, we get professional test organization test report,Besides, We get advanced equipment that could test product quality.

▶ Q: How is your After-Sales Service?

▶ A: Our after-sales service starts immediately after signing the contract.All products 100% inspection before shipment,

1.No matter what price term is applied we would try our best to find a lowest freight cost for customers' interests.

2.The third-party inspection always gets real and true data from us . In the same time, we will also send production photos to customers to check.

3.Do our best to help customer arrange the shipment and customs clearance.

4.Instructions of installation, maintenance and repair are provided with full information.

5. 5-10 years warranty, the exact time varies according to different products and the specified circumstances.

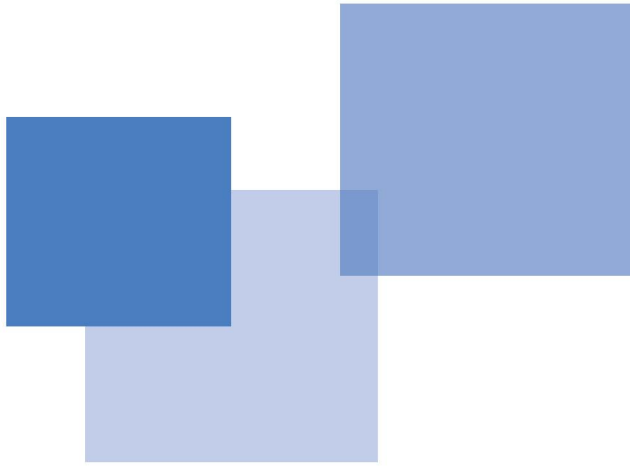
6. Accept Changing or Refunding if the products cannot be installed rightly.



# SHENZHOU XIANGDA METAL PRODUCTS CO., LTD. GLOBAL MARKET DISTRIBUTION



► XIANGDA WITH THE WHOLE WORLD IN OUR MIND



## Shenzhou Xiangda Metal Products Co., Ltd.

Address: The junction of Anping County and Shenzhou  
City, Hengshui City, Hebei Province, China.

Telephone/WhatsApp/WeChat: +86-133 1582 2444

E-mail: [sales@xdmetalmesh.com](mailto:sales@xdmetalmesh.com)

Website: [www.xdmetalmesh.com](http://www.xdmetalmesh.com)



WhatsApp



WeChat